

PART OF THE NW.1/4, OF SEC. 36, T.7N., R.2W., S.L.B. & M.

105

# WEBER INDUSTRIAL PARK - PLAT D

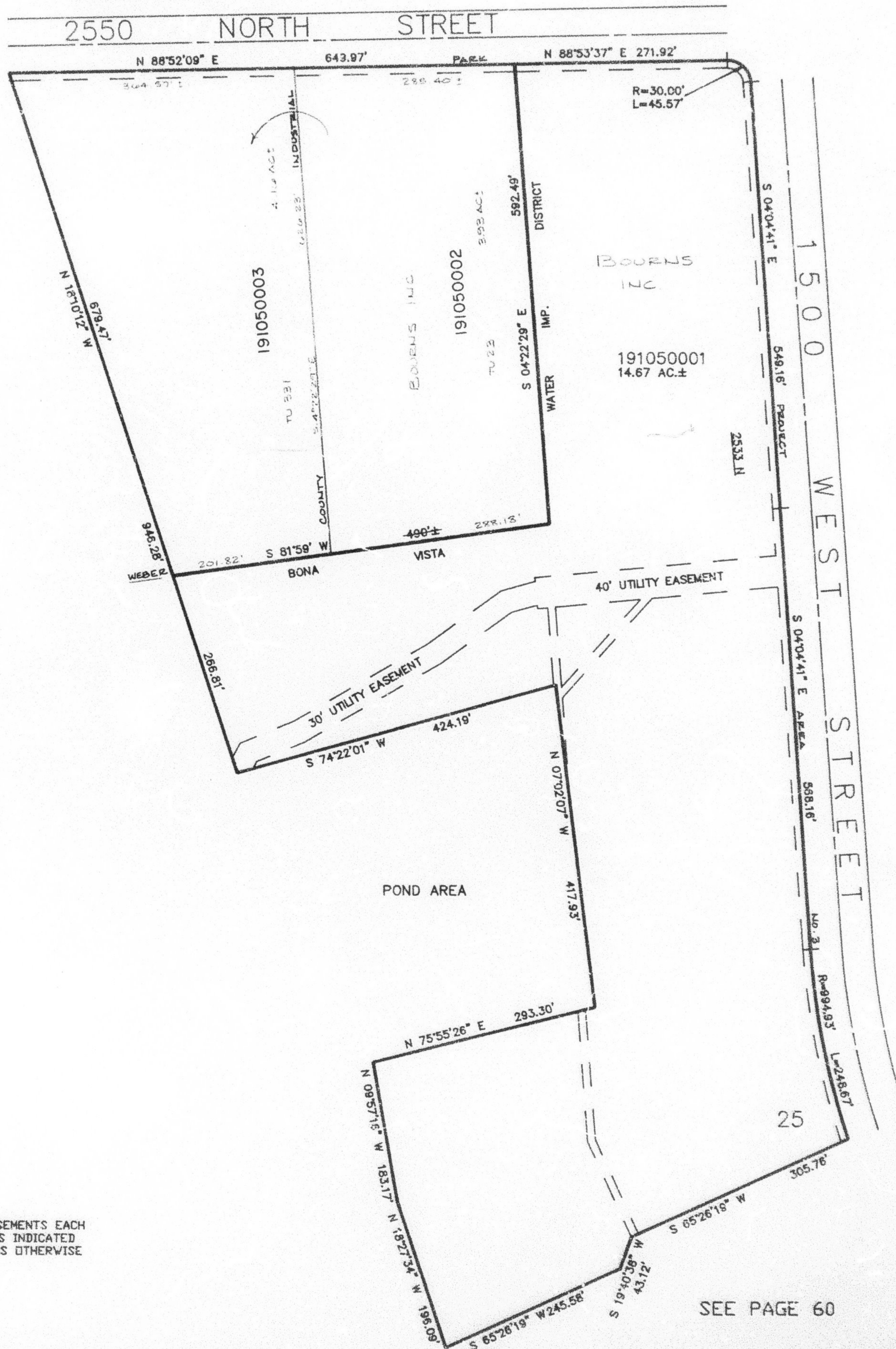
IN WEBER COUNTY

TAXING UNITS: 17 & 23, 331

SCALE 1" = 120'

SEE PAGE 59

SEE PAGE 41



SEE PAGE 41

SEE PAGE 60

SEE PAGE 60

10' UTILITY & DRAINAGE EASEMENTS EACH  
SIDE OF PROPERTY LINES AS INDICATED  
BY DASHED LINES EXCEPT AS OTHERWISE  
SHOWN.

FOR COMPLETE ENG DATA SEE  
ORIGINAL DEDICATION PLAT IN  
BOOK 40, PAGE 69 OF RECORDS.